



RECP #: 752690
 RECORDED 5/8/2019 AT 1:12 PM BK# 2620 PG# 1732
 Debra K. Lee, CLERK OF LARAMIE COUNTY, WY PAGE 1 OF 1

STATE OF WYOMING CORNER RECORD

(In compliance with the CORNER PERPETUATION AND FILING ACT, Wyoming Statutes, 1997 Section 33-29-140, et. seq., and the Rules and Regulations of the Board of Registrations for Professional Engineers and Professional Land Surveyors)

NORTHWEST CORNER SECTION 7, T. 18 N., R. 61 W., 6TH P.M., LARAMIE COUNTY, WYOMING

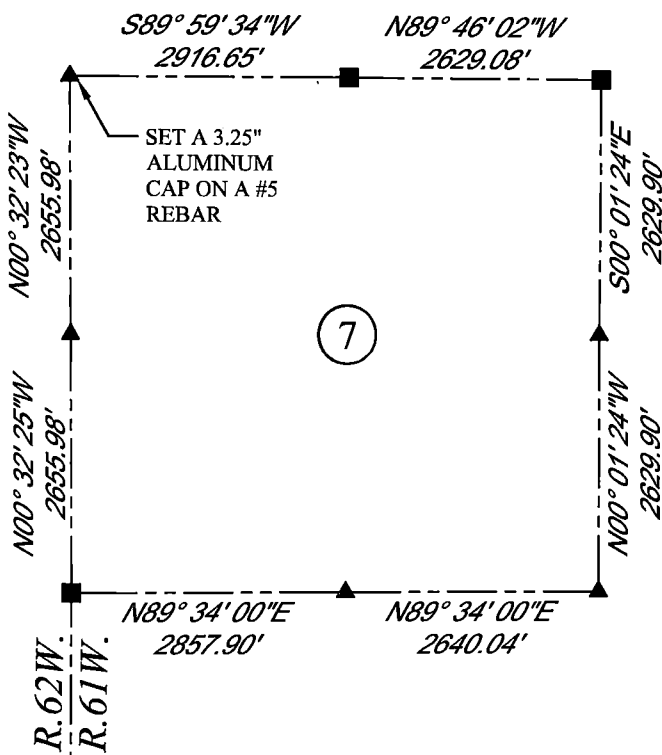
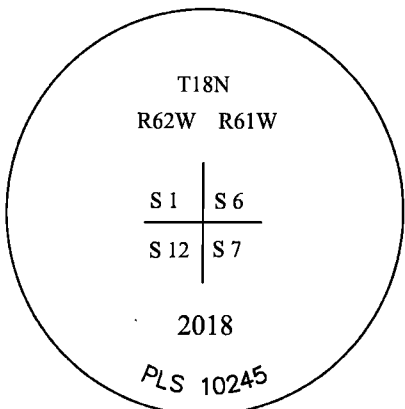
GLO: SET A LIMESTONE 16X12X8. 11" DEEP WITH 5 MARKS ON THE SOUTH AND ONE ON THE NORTH SIDE FOR CORNER TO SECTIONS 1, 6, 7, AND 12.

FOUND: NOTHING.

SET: 3.25" ALUMINUM CAP ON #5 REBAR, 16" BELOW SURFACE. POSITION RE-ESTABLISHED BY SINGLE PROPORTION.



SCALE: NONE
 NORTH DETERMINED BY
 G.P.S OBSERVATIONS



LEGEND:

- FOUND BLM CAP
- FOUND USFS CAP
- FOUND STONE
- FOUND PRIVATE MONUMENT
- ◆ CALCULATED POSITION
- ▲ SET MONUMENT (LS10245)
- SECTION LINE

DATE OF FIELD WORK: 09/26/2018 OFFICE REFERENCE: MERIDEN

CROSS INDEX DIAGRAM

1	2	3	4	5	6	7	8	9	10	11	12	13	14	15	16	17	18	19	20	21	22	23	24	25	
A																									A
B																									B
C		6																							C
D			5																						D
E				4																					E
F					3																				F
G						2																			G
H							1																		H
I																									I
J																									J
K																									K
L																									L
M																									M
N																									N
O																									O
P																									P
Q																									Q
R																									R
S																									S
T																									T
U																									U
V																									V
W																									W
X																									X
Y																									Y
Z																									Z
	1	2	3	4	5	6	7	8	9	10	11	12	13	14	15	16	17	18	19	20	21	22	23	24	25

WOOD
 2615 AVIATION DRIVE
 SHERIDAN, WY 82801
 PH: 307-675-6400



THIS CORNER RECORD WAS
 PREPARED BY ME OR UNDER
 MY DIRECTION AND
 SUPERVISION,
 SEAL AND SIGNATURE

